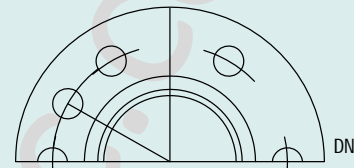


BELLOW FLANGES

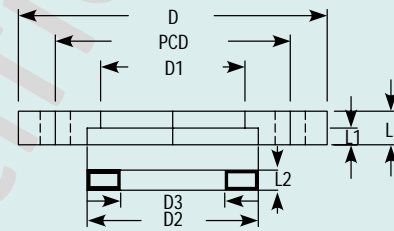
Bellow flanges are used to fit a bellow to a glass component. Standard Bellow are made Cast Iron. Cast Iron with Epoxy Coated, Cast Iron with PTFE coated, Aluminum, Silumin, Stainless Steel, 304 & 316 and are used in FBV, VB, FB type bellows. These are provided with two holes at 180° for Distance - locking bolts and are supplied with a split ring.

Cat.Ref.	DN	D	D1	D2	D3	L	L1	L2
BF1*	25	95	43	51	33	7	3	6
BF1.5*	40	110	58	66	45	7	3	6
BF2*	50	120	70	81	57	7	3	6
BF3*	80	155	101	112	84	7	3	6
BF4*	100	200	134	148	113	8	3	6
BF6*	150	275	186	196	164	8	3	6
BF9*	225	350	260	282	234	8	3	6
BF12	300	425	342	363	310	10	5	8



Drilling details

Cat.Ref.	PCD	n x d ϕ	n x d1 ϕ
BF1	70	3 x 9 ϕ	2 x 9 ϕ
BF1.5	86	3 x 9 ϕ	2 x 9 ϕ
BF2	98	3 x 9 ϕ	2 x 9 ϕ
BF3	133	6 x 9 ϕ	2 x 9 ϕ
BF4	178	6 x 9 ϕ	2 x 9 ϕ
BF6	254	6 x 9 ϕ	2 x 9 ϕ
BF9	310	8 x 11 ϕ	2 x 11 ϕ
BF12	395	12 x 11 ϕ	2 x 11 ϕ



ADAPTOR BELLOW FLANGES

Adaptor bellow flange are used to fit a bellow to a flange having different bolt configuration. These flanges are made of cast iron and are supplied with a split ring.

These are particularly used to fit a bellow with a non-glass equipment like Glass-lined Reactor etc. These are used in FBF, VBF type PTFE bellows.

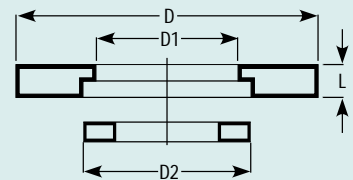
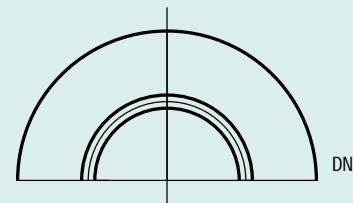
Adaptor bellow flanges are generally supplied undrilled. However, if specified, these can be supplied drilled as per "Table E", "Table F" and "ASA150" standards.

Undrilling flanges

Cat.Ref.	DN	D	D1	D2	L
BFA1*	25	115	43	51	7
BFA1.5*	40	150	58	66	7
BFA2*	50	165	70	81	7
BFA3*	80	200	101	112	7
BFA4*	100	220	134	148	8
BFA6*	150	285	186	196	8
BFA9*	225	395	260	282	8
BFA12	300	445	342	363	10

Drilled to Table E

Cat.Ref.	PCD	n x d ϕ
BFA1/E	82	4 x 12 ϕ
BFA1.5/E	98	4 x 12 ϕ
BFA2/E	114	4 x 16 ϕ
BFA3/E	146	4 x 16 ϕ
BFA4/E	178	8 x 16 ϕ
BFA6/E	235	8 x 19 ϕ
BFA9/E	324	12x19 ϕ
BFA12/E	406	12x23 ϕ



Drilled to Table F

Cat.Ref.	PCD	n x d ϕ
BFA1/F	87	4 x 16 ϕ
BFA1.5/F	105	4 x 16 ϕ
BFA2/F	127	4 x 16 ϕ
BFA3/F	165	8 x 16 ϕ
BFA4/F	190	8 x 16 ϕ
BFA6/F	260	12 x 19 ϕ
BFA9/F	356	12 x 23 ϕ
BFA12/F	438	12 x 23 ϕ

Drilled to ASA 150

Cat.Ref.	PCD	n x d ϕ
BFA1/A	79	4 x 16 ϕ
BFA1.5/A	98	4 x 16 ϕ
BFA2/A	121	4 x 19 ϕ
BFA3/A	152	4 x 19 ϕ
BFA4/A	190	8 x 19 ϕ
BFA6/A	241	8 x 19 ϕ
BFA9/A	298	8 x 19 ϕ
BFA12/A	432	12x23 ϕ

* marked items are available fast.